



USMLE[®]

United States Medical Licensing Examination

WITH YOU
AT EVERY STEP

To Attempt a
FREE
Mock Test
Call @
+91 7219 204 804

KAPLAN

Certified Education Provider

LOGIQQUEST

USMLE

USMLE expanded as United States Medical Licensing Examination, is one of the toughest licensure tests in the world. Sponsored by FSMB (Federation of State Medical Boards) & NBME (National Board for Medical Examiners), USMLE is conducted in three steps and consists of four different examinations.

Broadly USMLE is divided in to three Steps:

Step 1: A test of Basic Sciences

Step 2: A test of Clinical Knowledge

Step 3: A two day comprehensive test with emphasis on Patient Management

HERE IS A BREAKDOWN OF USMLE STEPS

Step	Time	Syllabus	No. of Questions	Passing Score
Step 1	7 hours exam + 1 hour break	Anatomy, Physiology, Biochemistry, Pathology, Microbiology, Pharmacology & Behavioral Science	280	PASS / FAIL (No Negative Marking)
Step 2 CK	8 hours exam + 1 hour break	Internal Medicine, Pediatrics, Psychiatry, Obstetrics & Gynaecology & Surgery	318	214 (No Negative Marking)
Step 3	Day 1 : About 7 hours including breaks	Internal Medicine, Pediatrics, Psychiatry, Obstetrics / Gynaecology & Surgery, Epidemiology/Biostatistics, Patient Safety & Ethics	233 180 & 13 CCS#	196 (No Negative Marking)
	Day 2 : About 9 hours including breaks			

CCS - Computer Case Simulations

OET (Occupational English Test) - With the recent change in the USMLE exam pattern STEP 2 CS has been cancelled and now students will have to attempt an english proficiency test OET

OET Sub-Sections	Listening	Reading	Writing	Speaking
Duration	45 Minutes	60 Minutes	45 Minutes	Reading
Description	3 Parts - 42 Questions	3 Parts - 42 Questions	Letter writing (Professional Specific)	Role - Play (Professional Specific)



USMLE Help Line +91 7219 204 804
www.logiquest.in

WHY CHOOSE KAPLAN MEDICAL?

EXCLUSIVE SERVICES

Kaplan has been dedicated to helping medical students and Doctors prepare for the USMLE for over 40 years. Kaplan remains the leader in USMLE preparation, by constant creation of new products and services that help medical students and doctors score higher. We are proud of our personalized services and exclusive resources that help our students attain the highest score possible on the USMLE exam series, providing the key to secure their residency.

FLEXIBLE USMLE STUDY OPTIONS



Our “Plus Programs” let you combine any In Center or On Demand course with a Live or Live Online class. Maximize your study planning and save.

Pro tip: Get added savings with our Multi-Step prep options. Medical Advisors are on-hand to help you decide which program is right for you.

ALL KAPLAN COMPREHENSIVE OPTIONS INCLUDE



LECTURE NOTES

Get updated volumes in print and eBook packed with easy-to-understand colour images and table



DIAGNOSTIC TEST

Quickly understand your strengths and opportunities with 150 exam-like questions.



ASSESSMENT EXAMS

Know where you stand with over 700 exam-like questions



QBANK

Eliminate test-day anxiety with thousands of exam-like questions and complete explanations.

SIMULATED EXAMS

Know when you are ready with our full length exams and complete explanations



Certified Education Provider

USMLE Help Line +91 7219 204 804
www.logiquest.in

PATHWAY TO RESIDENCY

FIRST...	THEN	NEXT	AFTER	FINALLY
<p>Master the USMLE steps</p> <p>Step 1 Basic Medical Sciences 7-10 months prep</p> <p>Step 2CK Clinical Knowledge 4-7 months prep</p> <p>OET</p> <p>1 - 2 months prep</p>	<p>Get ECFMG Certified</p> <p>Register through ECFMG</p> <p>Verify Medical Degree</p> <p>Confirm you passed Step1, 2CK, OET</p> <p>Receive ECFMG Certification</p>	<p>Apply for Residency</p> <p>Get letters of recommendation</p> <p>Write personal statement</p> <p>Decide specialty and which programs to apply</p> <p>Submit application through ERAS</p>	<p>Take Step 3</p> <p>The Patient Management portions of the USMLE can be taken in Residency or before to increase competitiveness (3-4 months prep)</p>	<p>Enter the Match</p> <p>The NRMP or National Residency Matching Program happens once per year.</p> <p>Work with a Kaplan Expert to plan out your Match time-line and ensure you are on track for Applications and Interviews</p>

HIGHEST-YIELD CONTENT

Kaplan Medical's research team selects topics that are most likely to be tested and most important for exam success. We offer a variety of options that fit your individual study needs and preferred learning styles: these options include live lecture courses, online resources and a combination of such personalized courses.

EXPERT FACULTY

Our faculty pool comprises of U.S. medical school faculty and practitioners, who are acclaimed lecturers in their respective fields. They hold unique insights into the high-yield content and how it is tested on the USMLE.

Our Faculty Team



Dr. John Barone



Dr. Salvatore Turco



Dr. Steven Harris



Dr. Wilson Britt



Dr. Joshua Brooks



Dr. James White



Dr. David Seastone



USMLE LIVE ONLINE COURSE OPTIONS

With access over 270 hours of live online lectures, this Program allows you the benefit of live interaction with faculty and peers.

Live Online Program also includes:

- ✓ 7 months access to Step 1 / Step 2 CK On-Demand Lectures (over 200 hrs of interactive content)
- ✓ 7 months access to Step 1 / Step 2 CK Q-bank with 3000+ exam like practical questions
- ✓ A diagnostic test & 2 Full length simulated exams
- ✓ Subject-based Assessment Tests
- ✓ Full set of UPDATED Kaplan Lecture Notes
- ✓ **Enjoy Free EXTRA bonus On-Demand access till the beginning of Live Online Lectures.**

USMLE ON-DEMAND COURSE OPTIONS

With access over 200 hours of lectures, this Program provides the benefits of learning from interactive videos that go hand in hand with your study material.

On Demand Program also includes:

- ✓ 6 / 12 months access to Step 1 & 3 / 6 / 12 months for Step 2 CK On-Demand Lectures
- ✓ 6 / 12 months access to Step 1 & 3 / 6 / 12 Step 2 CK Q-bank with 3000+ exam like questions
- ✓ A diagnostic test & 2 Full length simulated exams
- ✓ Subject-based Assessment Tests
- ✓ Full set of UPDATED Kaplan Lecture Notes

Program	Live Lectures	Recorded Lectures	Question Bank	Tests	Books
Step 1 Live Online	270+ Hours	220+ hours	3000+ Questions	1 Diagnostic 2 Simulated & Subject tests	7 books in print and e-books
Step 1 On Demand	No	220+ hours	3000+ Questions	1 Diagnostic 2 Simulated & Subject tests	7 books in print and e-books
Step 2 CK Live Online	215 Hours	On Demand - 115 hrs MTB - 53 hrs Shelf Prep - 22 hrs	Q-Bank-2900+ Qs MTB-600 Qs Shelf Prep-350 Qs Warm Up-1600 Qs	1 Diagnostic 2 Simulated & Subject tests	5 Books, Master the Boards & Review Book
Step 2 CK On Demand	No	On Demand - 115 hrs MTB - 53 hrs Shelf Prep - 22 hrs	Q-Bank-2900+ Qs MTB-600 Qs Shelf Prep-350 Qs Warm Up-1600 Qs	1 Diagnostic 2 Simulated & Subject tests	5 Books, Master the Boards & Review Book
Step 3 Live Online	100+ hours	100+ Hours	900 questions	5 subject tests	2 books in print and e-books
Step 3 On Demand	No	100+ Hours	900 questions	5 subject tests	2 books in print and e-books

A 3 month extension can be availed for all online resources including recorded lectures & Quiz Bank, if required

PREP AT OUR NEW YORK CENTER

Interested in preparing for the USMLE® at our New York Center? Good choice. Here's what you need to know about our most comprehensive, personalized USMLE prep.

WHAT TO EXPECT

- + Face to face advising and study plan support
- + Weekly workshops on critical thinking and career advancement
- + Residency timeline and application support
- + Easy networking with fellow students and physicians
- + U.S. experience opportunities that strengthen your application
- + Dedicated attention from Kaplan Medical's expert faculty

IN CENTER PROGRAM SUCCESS IS ACHIEVED BY

- + Consistent study of Kaplan's USMLE materials through video review, class attendance, and question practice in our testing lab
- + Attending Critical Thinking Seminars, Weekly Advancement Workshops, and Group Advising Sessions
- + One-on-one meetings with your academic advisor to focus your study and assess progress at least once a month

SAVE ON YOUR PREP WITH OUR MULTI-STEP DISCOUNT

MULTI-STEP PACKAGE	PRICE
Step 1 In Center + Live - 12 Months	\$9,999
Step 2 CK In Center + Live - 9 Months	\$7,499 - \$3,750
\$13,749	

Map out your residency journey and maximize your savings. Immerse yourself in the United States for up to **21 months** at our New York Center.

Applying for a student visa? Visit <https://logiquest.in/faqs/>

KAPLAN MEDICAL

USMLE Help Line +91 7219 204 804
www.logiquest.in

IN CENTER STUDY PHASES

1

Review

Start your learning with subject-based review using the guided study plan provided by your advisor (it includes books, assessments and video exercises). Attend weekly group seminars and meet with your advisor to check progress.

2

Remediate

Integrate the subjects as they are tested on the exam during your Live Lecture program. Re-review foundational content as needed to cover any gaps in knowledge.

3

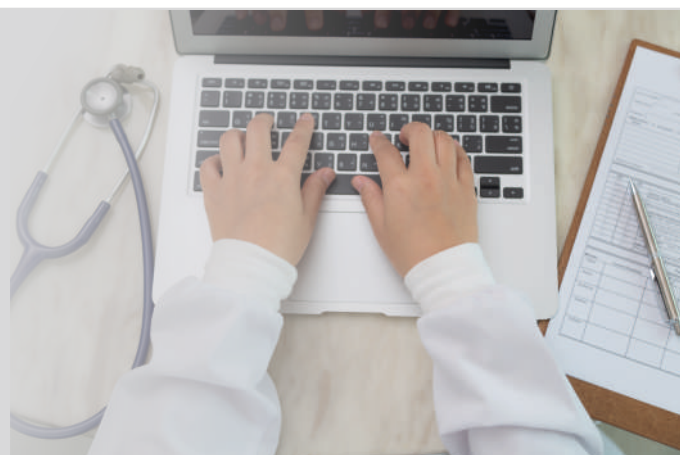
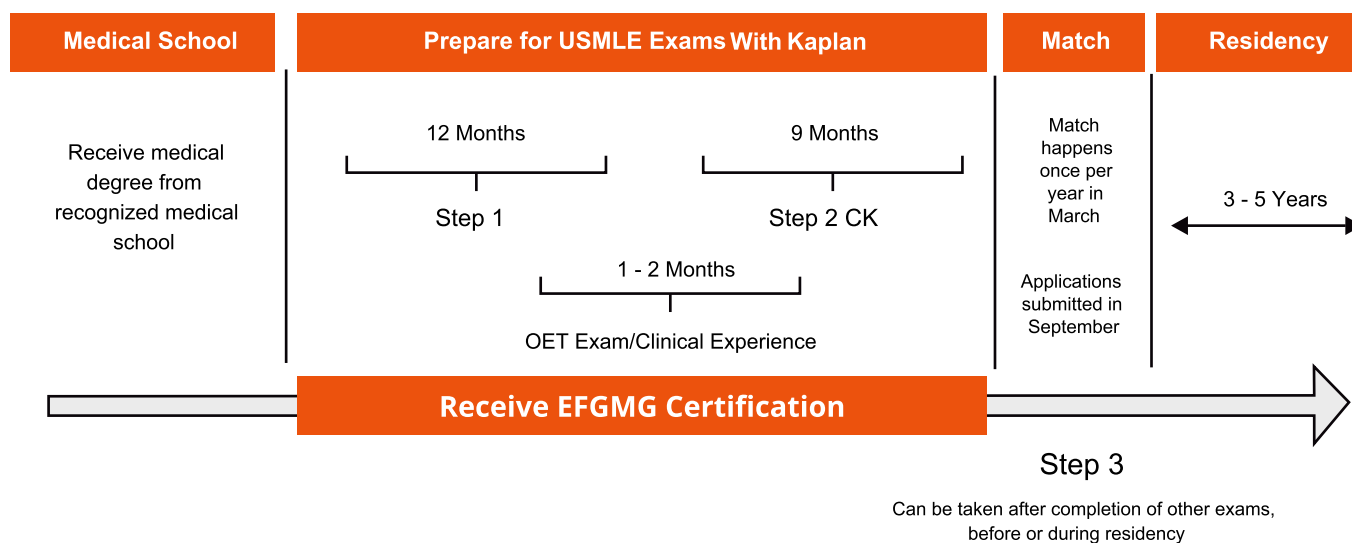
Practice

Use Kaplan's Qbank and take full-length assessment exams for realistic practice to be best prepared for exam day!

What Are the Live Lectures?

The Live Lectures are a component of your In Center program. This is an intense high-yield review of the most heavily tested topics and concepts with our world renowned faculty. Because your live classes integrate key concepts, students should prepare for a minimum of 3 months to ensure they have the foundational level of knowledge needed for the best outcomes.

TIMELINE FOR IMGs



KAPLAN MEDICAL

USMLE Help Line +91 7219 204 804
www.logiquet.in

SELECTING YOUR START DATE

PROGRAM OPTIONS

Step 1 In Center with Live - 12 Month

Step 2 CK In Center with Live - 9 Month

5 STEPS

Step 1. Select your Center Start Date

Step 2. Plan your Live Lectures

Step 3. Finalize documents for your I-20

Step 4. Apply for Visa

Step 5. Arrive in New York and Begin your Program!



DON'T FORGET...

- Students should plan their Live Lectures towards the **middle/second half** of their program for best outcome
- Students who come on an F-1 visa are allowed to enter the U.S. up to 30 days before the start date listed on their I-20
- F-1 students should allow enough time to enroll in their course, provide the necessary documents, have their visa appointment, and arrive in the U.S. **Students should select a start date no sooner than at least 4 months from the time they enroll.**

NY CENTER START DATES

Tuesday, February 1st, 2022
Tuesday, March 1st, 2022
Tuesday, April 5th, 2022
Tuesday, May 3rd, 2022
Tuesday, June 7th, 2022
Tuesday, July 5th, 2022
Tuesday, August 2nd, 2022
Tuesday, September 6th, 2022
Tuesday, October 4th, 2022
Tuesday, November 1st, 2022
Tuesday, December 6th, 2022
Tuesday, January 3rd, 2023
Tuesday, February 7th, 2023
Tuesday, March 7th, 2023

STEP 1 LIVE LECTURES

6/13/2022 - 9/16/2022 (*Jan, Feb, March 2022)
9/26/2022 - 1/15/2023 (*Apr, May, Jun, Jul 2022)
2/27/2023 - 6/2/2023 (*Aug, Sept, Oct, Nov 2022)
6/12/2023 - 9/15/2023 (*Dec 2022, Jan, Feb, Mar 2023)
9/25/2023 - 1/14/2024 (*Apr, May, Jun, Jul 2023)

STEP 2 CK LIVE LECTURES

8/1/2022 - 9/16/2022 (*Feb, Mar, Apr, May, Jun, Jul 2022)
1/23/2023 - 3/10/2023 (*Aug, Sep, Oct, Nov, Dec 2022)
6/19/2023 - 8/4/2023 (*Jan, Feb, Mar, Apr, May 2023)
1/22/2024 - 3/9/2024 (*Jun, Jul, Aug, Sep, Oct, Nov, Dec 2023)
6/18/2024 - 8/3/2024 (Jan, Feb, Mar, Apr, May 2024)

**Recommended Center Start Date*

KAPLAN MEDICAL

USMLE Help Line +91 7219 204 804
www.logiquest.in

Questions?
Send an email to -
usmle@logiquest.in

WEEKLY WORKSHOPS TO MAXIMIZE YOUR SUCCESS

With Kaplan's weekly structured seminars, you'll be regularly interacting with students and advisors while preparing for residency.

CRITICAL THINKING SESSIONS

Weekly, 2-hour, team-based sessions that focus on problem-solving and critical thinking.

Autoimmune Disease	Coagulation Disorders	Anemia
Lower GI Disorder	Glomerular Diseases	Valvular Heart Diseases
Vasculitides, Cardiomyopathy	Meningitis	Congenital Heart Disorders
Stroke	Arrhythmia, Leukemia & Lymphoma	Psychotic & Substance Abuse Disorders
Adrenal Disorders	Obstructive & Restrictive Lung Diseases	
Arthritis	Diabetes Mellitus	

Sessions are divided into a pre-clinical (for those preparing for Step 1) and a clinical emphasis (for those preparing for Step 2 CK or Step 3).

WEEKLY ADVANCEMENT WORKSHOPS

Achieve the best USMLE score possible with weekly, 1-hour discussion-based sessions for all In Center students.

Session Structure

Introductions

New students introduce themselves

Check-in

Each student shares a challenge or success they've experienced since the last session

Didactic

Facilitator gives a short overview of the week's topic

Challenge Questions & Cases

One student reads the first challenge question or case aloud, and the group engages in a discussion to present multiple solutions

Wrap-up

Students summarize 2 to 3 key takeaways from the session

Sample Monthly Topics *			
January Assessing your goals and values	February Math and statistics fundamentals	March What you need to know about LORs	April Cultural competence
May Drafting a personal statement	June Critiquing a personal statement	July Selecting specialties	August How to prepare for your interview
September How to deal with red flags	October The challenging patient encounter	November Presentation skills	December Alternative practices for stress reduction

*To learn more, visit <https://logiquest.in/advancement-workshop/>



USMLE Help Line +91 7219 204 804
www.logiquest.in

USMLE AND RESIDENCY ADVISING IN NEW YORK

Studying at our Kaplan center in New York comes with access to personalized USMLE and residency support from our team of expert academic medical advisors. Kaplan has assisted thousands of international medical graduates on their pathway to residency. We strive to provide the guidance and expertise needed to help you make smart decisions that strengthen your application for medical residency in the U.S.

PERSONALIZED SUPPORT

Meet with your advisor to track progress against your study plan, evaluate test performance, and successfully advance through your program.

Whats covered during my 1-1 meetings?

- Creation of personalized weekly study plan to master content
- Diagnostic and quiz performance review
- Setting goals and support through obstacles
- USMLE and residency timeline planning
- Exam readiness, NBME score review

GROUP SEMINARS

Cover the essential USMLE and residency content with our experts and your colleagues. Receive study strategies to help you prepare most efficiently, and residency support to help increase your planning and competitiveness.

Sample Step 1 Topics:

- Interpreting Your Diagnostic Exam
- Study Plan Strategies
- Step 1 Test Taking Strategies
- USMLE and ECFMG Application Process
- Timeline to Test Day

Sample Step 2 Topics:

- Residency Timeline and Match Strategy Session
- Step 2 CK Study Strategies
- Obtaining Clinical Experience
- Navigating Your ERAS Application
- Researching Residency Programs
- Personal Statement Workshop
- Interview Workshop



USMLE Help Line +91 7219 204 804
www.logiquest.in

OUR TOP ACHIEVERS IN USMLE



Sparsha Reddy
Step 1 Score - 270
Step 2 CK Score - 260

Narayana Medical College,
Nellore



Sriveni Tangellapelli
Step 1 Score - 264
Step 2 CK Score - 254

Osmania Medical College,
Hyderabad



Nishel Kothari
Step 1 Score - 254
Step 2 CK Score - 266

Jawaharlal Nehru Medical College,
Belgaum



KLP Vaishnavi
Step 1 Score - 260

Gandhi Medical College,
Secunderabad



Prayag Jariwala
Step 1 Score - 254

Government Medical College,
Surat



Anirudh Danduboyina
Step 1 Score - 248

Gandhi Medical College,
Secunderabad



Emil Philip
Step 1 Score - 248

Madras Medical College,
Chennai



Devyani shinde
Step 1 Score - 241

B.J Medical College,
Pune



Shiva Teja
Step 1 Score - 240

Gandhi Medical College,
Secunderabad



KAPLAN

Certified Education Provider

LOGIQUEST

USMLE Help Line +91 7219 204 804

www.logiquest.in



Kaplan is the world leader in test preparation and has served millions of students since its founding 80 years ago. Kaplan offers preparation for more than 90 standardized tests for college and graduate school admissions and English-language proficiency, as well as academic tutoring and pre-college test prep. In addition, Kaplan Test Prep offers programs to prepare professionals for a variety of licensing and advanced designation exams as well as continuing education in various fields. Kaplan's depth of knowledge experience, resources and expert instructors are helping students get higher scores.



LogiQuest is a division of ThinkCell Learning Solutions Pvt. Ltd, engaged in providing world class preparatory solutions for USMLE and NBDE. LogiQuest is a result of ThinkCell's association with Kaplan Medical, one of the largest test prep companies in the world. LogiQuest as an exclusive Kaplan Certified Education Provider for USMLE & NBDE programs across India offers USMLE (Step 1, Step 2 CK & Step 3) and NBDE (Part 1 & Part 2).

ThinkCell (formerly Gateforum Educational Services Pvt. Ltd) has two lines of business - Gateforum & LogiQuest. GATEFORUM, promoted by alumni of the IIMs and IITs, is the largest organization in the field of GATE training, with a presence in more than 50 cities and having trained more than 3,00,000 students since inception. GATEFORUM is the number 1 institute for preparation for GATE Exam. The technical team at GATEFORUM comprises of Post Graduates of IITs, IISc and eminent professors teaching for GATE for a number of years.

For a FREE Mock Test

Call +91 7219 204 804

LogiQuest is a division of Thinkcell Learning Solutions Pvt.Ltd.

email: usmle@logiquest.in, website: www.logiquest.in

Centers @ Ahmedabad | Bangalore | Chennai | Delhi | Hyderabad | Mumbai | Pune